

DIMENSIONS ARE APPROXIMATE
 OVERALL HEIGHT = 106.5"
 OVERALL WIDTH WITH RUB
 RAILS & FENDERETTES = 98"

(7) WHELEN 900 SUPER LED WARNING LIGHTS
 RED/R-W/RED/WHITE/RED/R-W/RED
 WITH CLEAR LENSES

(5) TECNIQ S330 AMBER
 MINI-LED MARKER LIGHTS

WHELEN 600 AMBER
 LED TURN ARROWS

OEM POWER
 ADJUSTABLE
 MIRRORS

FLASHING HEADLIGHTS W/
 DAYTIME RUNNING LIGHTS

(2) WHELEN 500 SERIES
 RED SUPER LED GRILLE
 LIGHTS IN CPI HOUSINGS
 WITH CLEAR LENSES

2" LED RUNNING
 BOARD LIGHTS

HIDDEN UNLOCK SWITCH
 IN GRILLE AREA

CAST PRODUCTS
 SIREN SPEAKERS

DRIVING LIGHT
 PRE-WIRE

THIS DRAWING IS FOR REPRESENTATIONAL PURPOSES ONLY. DETAILS ARE CONCEPTUAL AND ARE SUBJECT TO CHANGE DURING DESIGN AND CONSTRUCTION
 DIMENSIONS ARE APPROXIMATE UNLESS NOTED OTHERWISE TO MEET A SPECIFIC CUSTOMER NEED.

AUTOTRONICS
 DEMO



FRONT EXTERIOR VIEW
 CHIEF XL-III/FORD E-450 CHASSIS-GAS ENGINE

DATE:	03-25-22	DRAWING NO.	CPQ-5956
DWG.	SER	REV.	NR
DATE:			DEMO-1

APPROVAL SIGNATURE:

DIMENSIONS ARE APPROXIMATE
 OVERALL HEIGHT = 106.5"
 OVERALL WIDTH WITH RUB
 RAILS & FENDERETTES = 98"

(5) TECNIQ S330 RED
 MINI-LED MARKER LIGHTS

CHEVRONS ON THE
 REAR AROUND
 THE DOORS

LED LICENSE
 PLATE LIGHT

WHELEN 900 AMBER SUPER LED WITH CLEAR LENS

(2) WHELEN 900 24-DIODE LED LOAD LIGHTS

(2) WHELEN 900 SUPER LED
 WITH CLEAR LENSES:
 LEFT - BLUE/RIGHT - RED

REAR VIEW CAMERA

(2) WHELEN 900 RED
 SUPER LED WITH
 CLEAR LENSES AND
 BRAKE OVERRIDE

(1) EACH SIDE, WHELEN
 600 LED BRAKE/TAIL,
 600 LED TURN
 600 LED BACK-UP

INDEPENDENT BUMPER WITH
 NON-SKID FLIP-UP CENTER
 STEP AND COT PROTECTOR
 ON STEP EDGE. TOW HOOKS
 LOCATED BELOW STEP/BUMPER.

THIS DRAWING IS FOR REPRESENTATIONAL PURPOSES ONLY. DETAILS ARE CONCEPTUAL AND ARE SUBJECT TO CHANGE DURING DESIGN AND CONSTRUCTION
 DIMENSIONS ARE APPROXIMATE UNLESS NOTED OTHERWISE TO MEET A SPECIFIC CUSTOMER NEED.

AUTOTRONICS
 DEMO



REAR EXTERIOR VIEW
 CHIEF XL-III/FORD E-450 CHASSIS

DATE:	03-25-22
DWG.:	REV.
SER	NR

DRAWING NO.
 CPQ-5956
 DEMO-2

DIMENSIONS ARE APPROXIMATE
 OVERALL HEIGHT = 106.5"
 OVERALL LENGTH = 272.75"
 MODULE LENGTH = 169"

TECNIQ S330 RED MINI-LED MARKER LIGHT TO ALSO FLASH WITH TURN SIGNAL

(2) WHELEN 900 RED SUPER LED WARNING LIGHTS WITH CLEAR LENSES

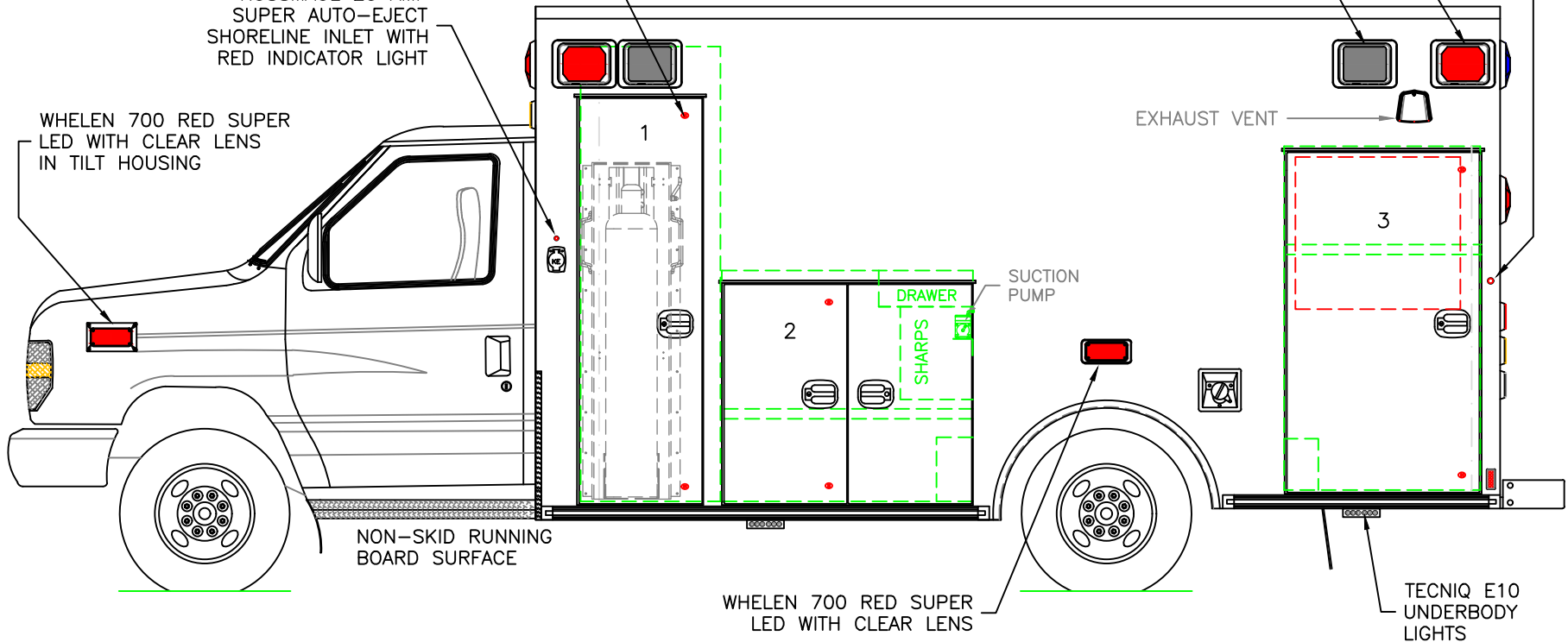
(2) WHELEN 900 24-DIODE LED SCENE LIGHTS

TOP/BOTTOM RED MINI-LED LIGHTS ON REAR FACING DOORS

KUSSMAUL 20 AMP SUPER AUTO-EJECT SHORELINE INLET WITH RED INDICATOR LIGHT

WHELEN 700 RED SUPER LED WITH CLEAR LENS IN TILT HOUSING

EXHAUST VENT



COMPARTMENT
 O.S.S #1

CLEAR OPENING: 70.00h x 18.25w
 INSIDE DIM'S.: 79.75h x 24.50w x 20.75d
 'EZ-02 LIFT' SYSTEM ON THE DOOR

O.S.S #2

CLEAR OPENING: 37.50h x 38.50w
 INSIDE DIM'S.: 40.50h x 44.00w x 20.75d
 (1) ADJUSTABLE SHELF

O.S.S #3

CLEAR OPENING: 58.50h x 30.75w
 INSIDE DIM'S.: 60.25h x 34.50w x 20.75d
 INSIDE/OUTSIDE ACCESS
 (1) ADJUSTABLE SHELF

THIS DRAWING IS FOR REPRESENTATIONAL PURPOSES ONLY. DETAILS ARE CONCEPTUAL AND ARE SUBJECT TO CHANGE DURING DESIGN AND CONSTRUCTION
 DIMENSIONS ARE APPROXIMATE UNLESS NOTED OTHERWISE TO MEET A SPECIFIC CUSTOMER NEED.

AUTOTRONICS
 DEMO

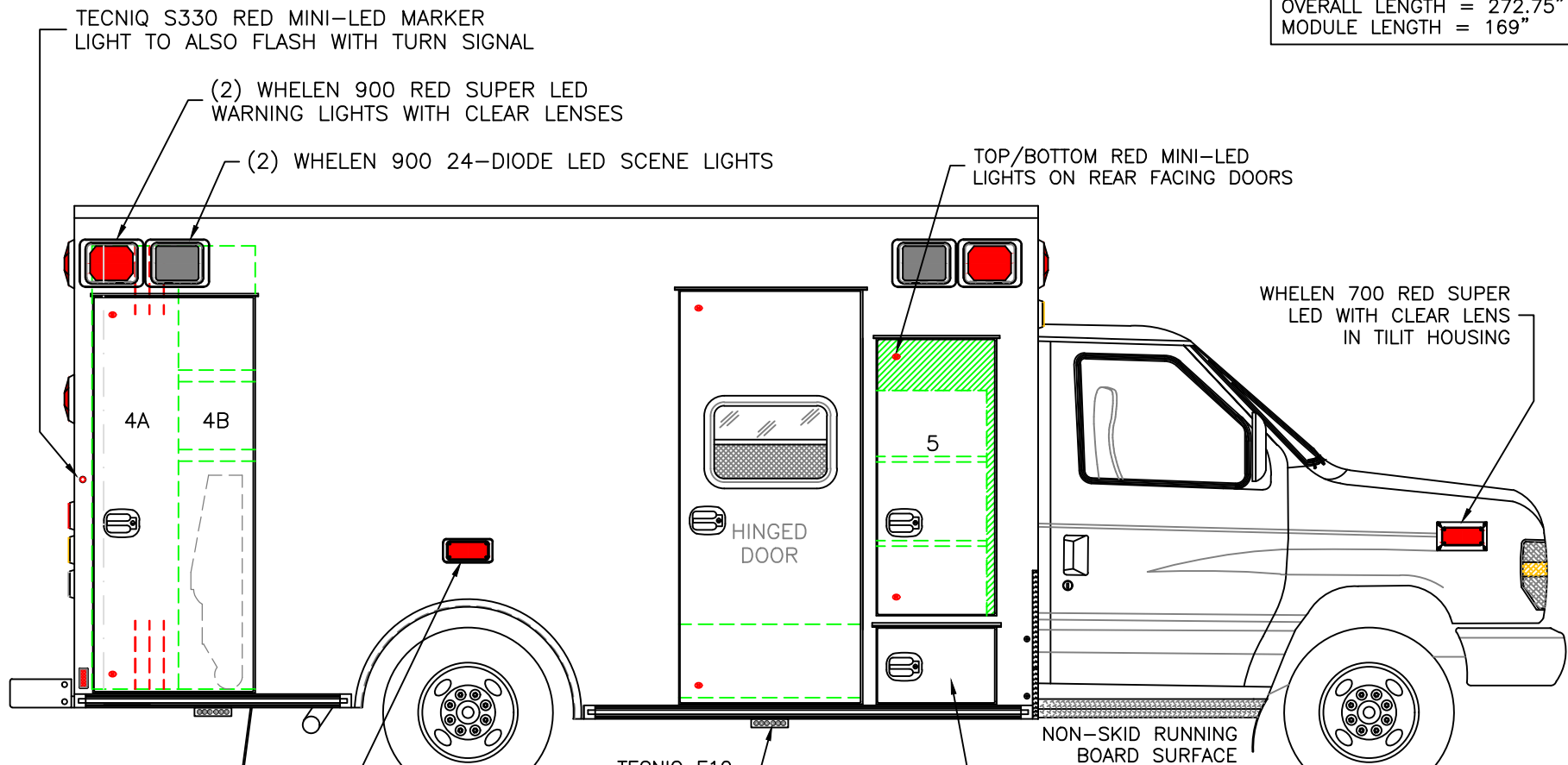


STREETSIDE EXTERIOR VIEW
 CHIEF XL-III/FORD E-450 CHASSIS

DATE:
 03-25-22
 DWG. REV.
 SER NR

DRAWING NO.
 CPQ-5956
 DEMO-3

DIMENSIONS ARE APPROXIMATE
 OVERALL HEIGHT = 106.5"
 OVERALL LENGTH = 272.75"
 MODULE LENGTH = 169"



COMPARTMENT
 O.S.S #4

CLEAR OPENING: 68.00h x 24.75w
 INSIDE DIM'S. 4A: 77.75h x 15.00w x 20.75d
 BACKBOARD/SCOOP STORAGE WITH (3)
 TOP AND BOTTOM DIVIDERS
 INSIDE DIM'S. 4B: 77.75h x 13.50w x 20.75d
 (2) ADJUSTABLE SHELVES WITH INSIDE/OUTSIDE ACCESS
 STAIR CHAIR STORAGE

O.S.S #5

CLEAR OPENING: 46.75h x 17.25w
 INSIDE DIM'S.: SEE PARTITION INTERIOR VIEW
 INSIDE/OUTSIDE ACCESS WITH (2) ADJUSTABLE SHELVES

THIS DRAWING IS FOR REPRESENTATIONAL PURPOSES ONLY. DETAILS ARE CONCEPTUAL AND ARE SUBJECT TO CHANGE DURING DESIGN AND CONSTRUCTION
 DIMENSIONS ARE APPROXIMATE UNLESS NOTED OTHERWISE TO MEET A SPECIFIC CUSTOMER NEED.

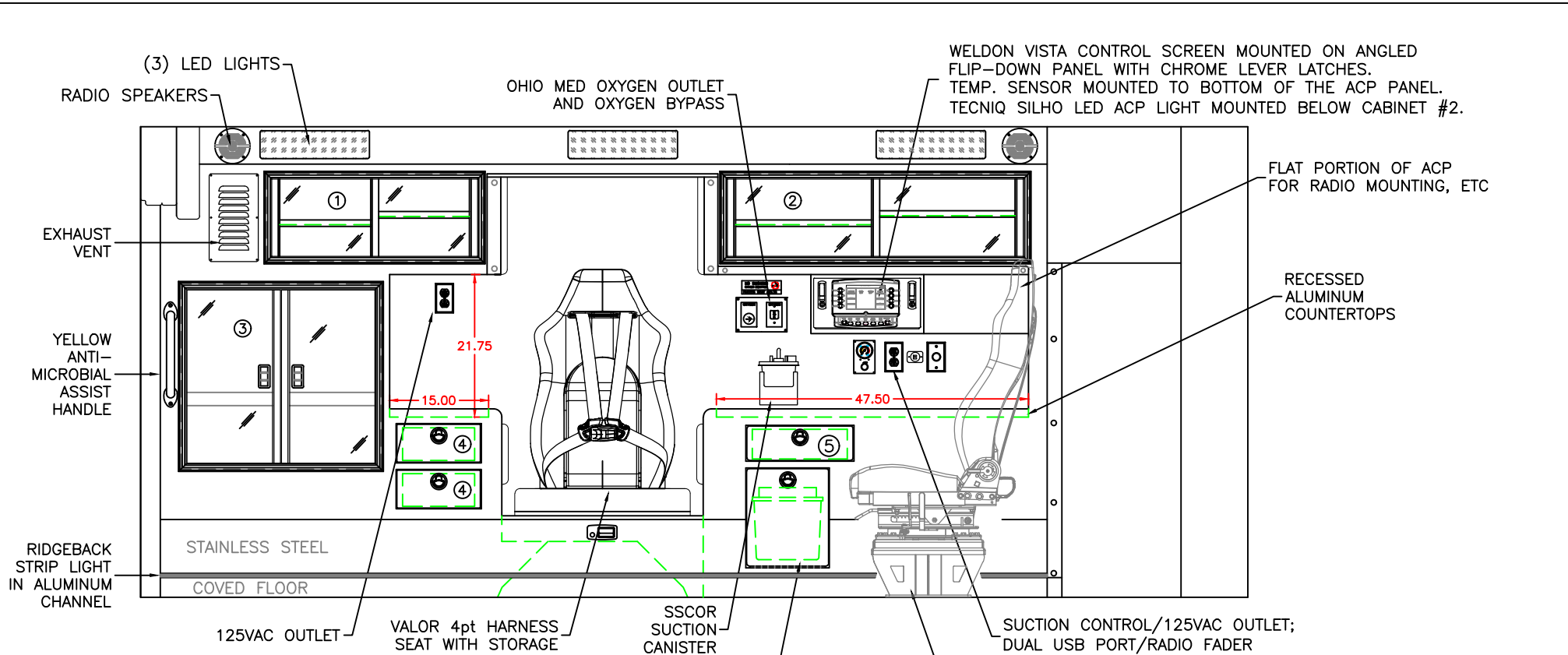
AUTOTRONICS
 DEMO



CURBSIDE EXTERIOR VIEW
 CHIEF XL-III/FORD E-450 CHASSIS

DATE:	03-25-22
DWG.:	REV.
SER	NR

DRAWING NO.
 CPQ-5956
 DEMO-4



COMPARTMENT

#1 DOOR OPENING: 11.75h x 31.50w
 INSIDE DIMS: 13.25h x 33.00w x 17.25d
 (1) ADJ SHELF EACH SIDE OF CENTER DIVIDER
 SLIDING POLYCARBONATE DOORS
 TOTAL CABINET WEIGHT RATING = 25 lbs.

#2 DOOR OPENING: 11.75h x 45.00w
 INSIDE DIMS: 13.25h x 46.50w x 17.25d
 (1) ADJ SHELF EACH SIDE OF CENTER DIVIDER
 SLIDING POLYCARBONATE DOORS
 TOTAL CABINET WEIGHT RATING = 25 lbs.

#3 DOOR OPENING: 26.50h x 28.75w
 INSIDE DIMS: O.S.S. #3
 HINGED POLYCARBONATE DOORS WITH FULL LENGTH
 HANDLES AND CENTER SQUEEZE LATCHES
 TOTAL CABINET WEIGHT RATING = 40 lbs.

#4 TWO PULL-OUT DRAWERS
 INSIDE DIMS: 5.00h x 11.00w x 12.00d
 LOCKING STAINLESS STEEL FLUSH PULL LATCHES
 TOTAL DRAWER WEIGHT RATING = 10 lbs. EACH

#5 PULL-OUT DRAWER WITH HINGED ACRYLIC WRITING SURFACE
 INSIDE DIMS: 4.50h x 14.50w x 13.25d
 LOCKING STAINLESS STEEL FLUSH PULL LATCH
 TOTAL DRAWER WEIGHT RATING = 10 lbs.

THIS DRAWING IS FOR REPRESENTATIONAL PURPOSES ONLY. DETAILS ARE CONCEPTUAL AND ARE SUBJECT TO CHANGE DURING DESIGN AND CONSTRUCTION DIMENSIONS ARE APPROXIMATE UNLESS NOTED OTHERWISE TO MEET A SPECIFIC CUSTOMER NEED.

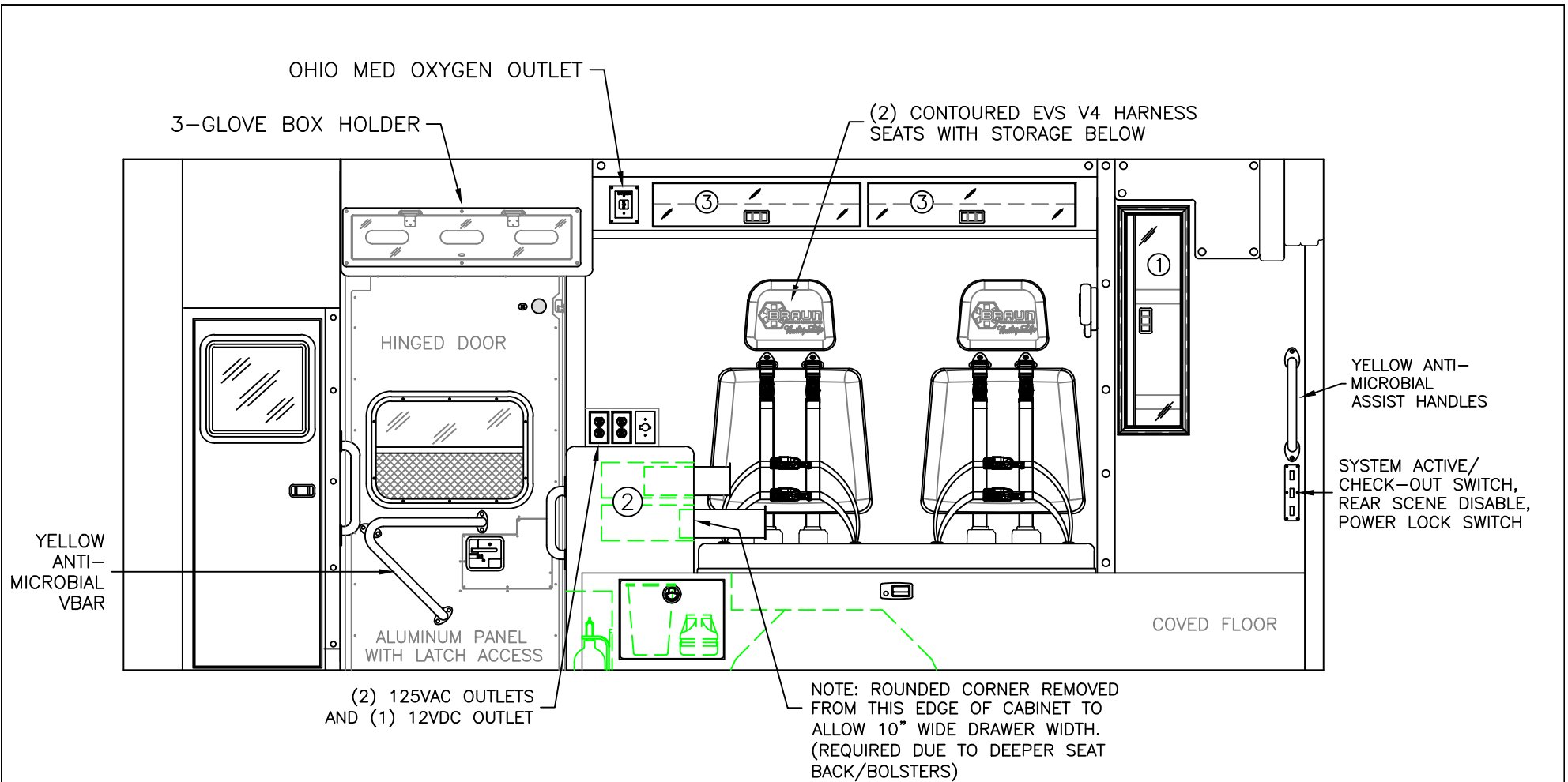
AUTOTRONICS
 DEMO



STREETSIDE INTERIOR VIEW
 CHIEF XL-III

DATE:	03-25-22
DWG.:	SER
REV.:	NR

DRAWING NO.
 CPQ-5956
 DEMO-5



COMPARTMENT

#1 DOOR OPENING: 30.00h x 7.25w
 INSIDE/OUTSIDE ACCESS TO OSS #4B
 HINGED POLYCARBONATE DOOR WITH FULL LENGTH
 HANDLE AND CENTER SQUEEZE LATCH
 TOTAL CABINET WEIGHT RATING = 25 lbs.

#2 CABINET WITH FLAT ALUMINUM COUNTERTOP
 (2) PULL-OUT DRAWERS TOWARDS THE BENCH
 INSIDE DIMS: 4.00h x 10.00w x 12.00d
 SHARPS/WASTE DRAWER BELOW UPPER DRAWERS
 LOCKING STAINLESS STEEL FLUSH PULL LATCHES
 TOTAL DRAWER WEIGHT RATING = 10 lbs. EACH

#3 DOOR OPENINGS: 6.25h x 29.25w
 INSIDE DIMS: 6.25h x 29.25w x 10.25d
 HINGED POLY DOORS WITH HOLD-OPENS
 CENTER SQUEEZE LATCHES
 43" MINIMUM HEADROOM BELOW THE CABINET
 TOTAL CABINET WEIGHT RATING = 10 lbs. EACH

THIS DRAWING IS FOR REPRESENTATIONAL PURPOSES ONLY. DETAILS ARE CONCEPTUAL AND ARE SUBJECT TO CHANGE DURING DESIGN AND CONSTRUCTION
 DIMENSIONS ARE APPROXIMATE UNLESS NOTED OTHERWISE TO MEET A SPECIFIC CUSTOMER NEED.

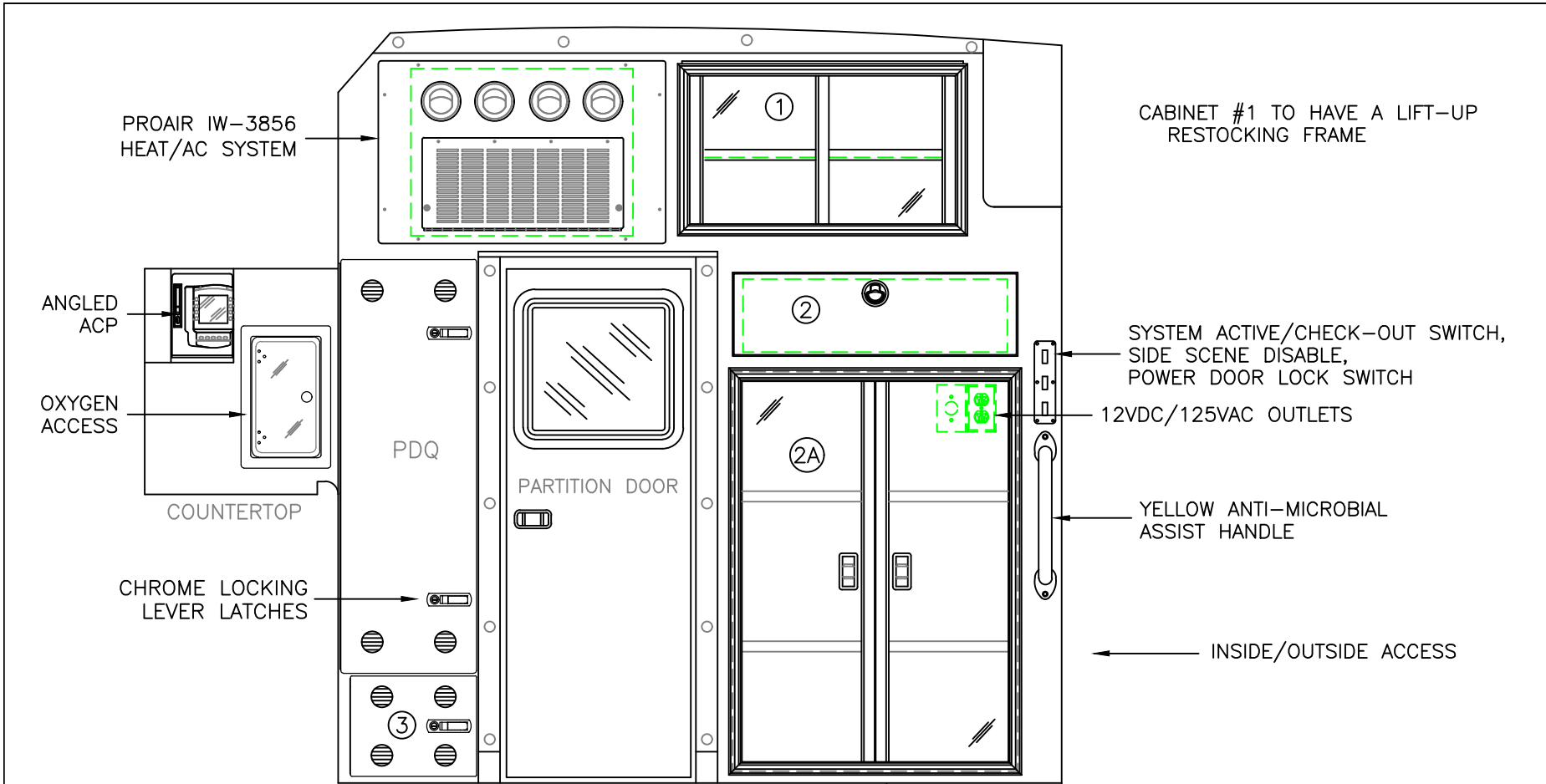
AUTOTRONICS
 DEMO



CURBSIDE INTERIOR VIEW
 CHIEF XL-III

DATE:	03-25-22
DWG.:	SER NR
REV.:	

DRAWING NO.
 CPQ-5956
 DEMO-6



CABINET #1 TO HAVE A LIFT-UP RESTOCKING FRAME

SYSTEM ACTIVE/CHECK-OUT SWITCH, SIDE SCENE DISABLE, POWER DOOR LOCK SWITCH

12VDC/125VAC OUTLETS

YELLOW ANTI-MICROBIAL ASSIST HANDLE

← INSIDE/OUTSIDE ACCESS

2" LED STEP-WELL LIGHT

COMPARTMENT

#1 DOOR OPENING: 14.25h x 25.50w
 INSIDE DIMS: 16.50h x 27.25w x 17.00d
 (1) ADJUSTABLE SHELF
 SLIDING POLYCARBONATE DOORS
 TOTAL CABINET WEIGHT RATING = 25 lbs.

#2 PULL-OUT DRAWER
 INSIDE DIMS: 7.00h x 25.25w x 16.00d
 LOCKING STAINLESS STEEL FLUSH PULL LATCH
 TEMPERATURE ADJUSTABLE WARMING PLATE AND THERMOSTAT WITHIN THE DRAWER
 TOTAL DRAWER WEIGHT RATING = 10 lbs.

#2A DOOR OPENINGS: 36.50h x 25.75w
 INSIDE DIMS: 38.00h x 31.50w x 20.75d
 HINGED POLYCARBONATE DOORS WITH FULL LENGTH HANDLES AND CENTER SQUEEZE LATCHES
 (2) ADJUSTABLE SHELVES
 TOTAL CABINET WEIGHT RATING = 60 lbs.

#3 VENTED RADIO CABINET
 INSIDE DIMS: 9.00h x 11.75w x 19.50d
 HINGED ALUMINUM DOOR
 CHROME LOCKING LEVER LATCH
 TOTAL CABINET WEIGHT RATING = 20 lbs.

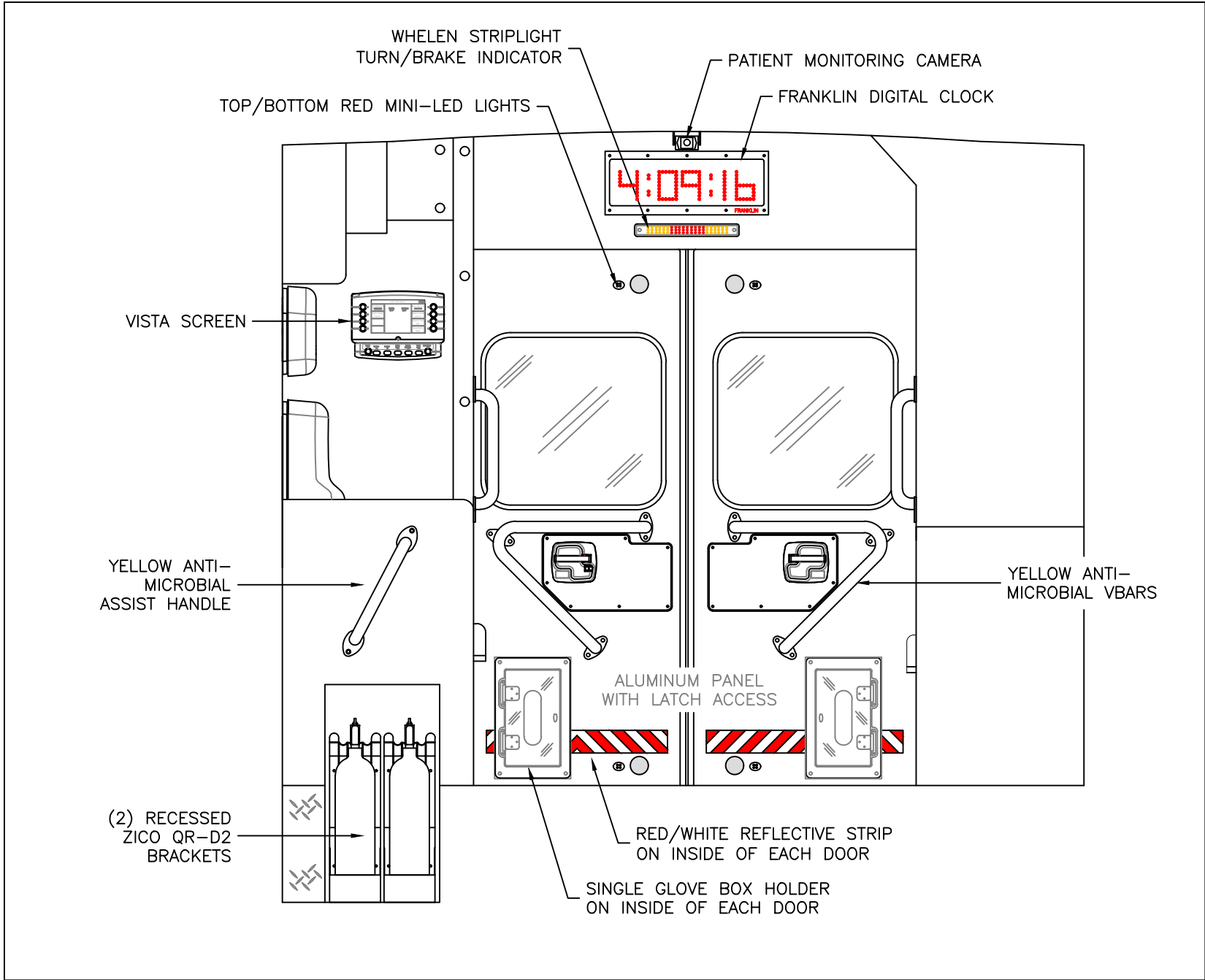
THIS DRAWING IS FOR REPRESENTATIONAL PURPOSES ONLY. DETAILS ARE CONCEPTUAL AND ARE SUBJECT TO CHANGE DURING DESIGN AND CONSTRUCTION
 DIMENSIONS ARE APPROXIMATE UNLESS NOTED OTHERWISE TO MEET A SPECIFIC CUSTOMER NEED.

AUTOTRONICS
 DEMO



PARTITION INTERIOR VIEW
 CHIEF XL-III

DATE: 03-25-22		DRAWING NO. CPQ-5956	
DWG. SER	REV. NR	DEMO-7	



THIS DRAWING IS FOR REPRESENTATIONAL PURPOSES ONLY. DETAILS ARE CONCEPTUAL AND ARE SUBJECT TO CHANGE DURING DESIGN AND CONSTRUCTION DIMENSIONS ARE APPROXIMATE UNLESS NOTED OTHERWISE TO MEET A SPECIFIC CUSTOMER NEED.

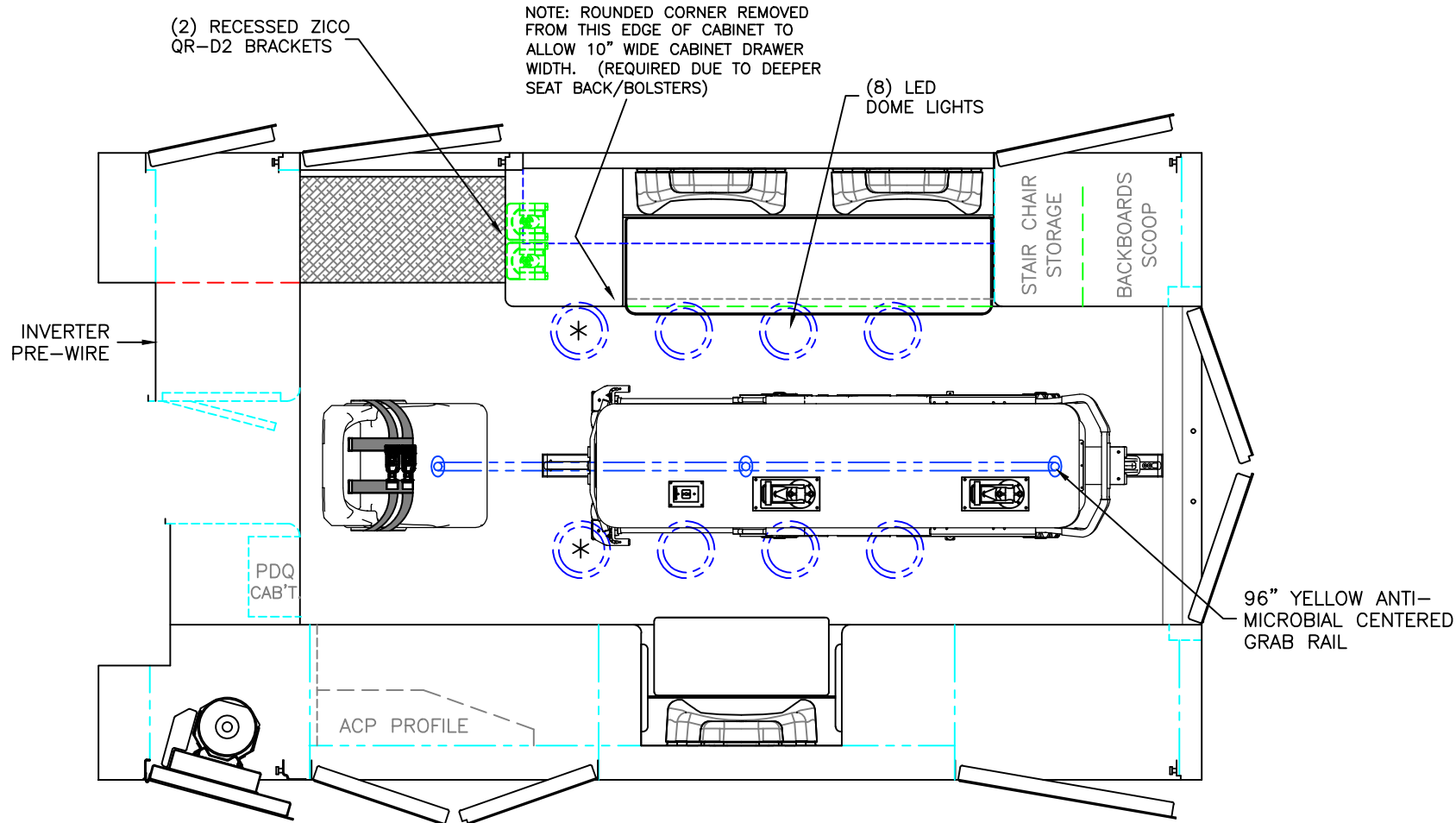
AUTOTRONICS
DEMO

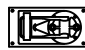


REAR INTERIOR VIEW
CHIEF XL-III

DATE:	03-25-22
DWG.:	SER NR

DRAWING NO.:	CPQ-5956
REV.:	DEMO-8



 = (2) RECESSED CEILING IV HANGER LOCATIONS

 = (1) CEILING OXYGEN OUTLET

* (2) ANTENNA BASES LOCATED OUTBOARD OF DOME LIGHTS WITH COAX SERVICE LOOP

CUSTOMER SUPPLIED STRYKER POWER LOAD CENTER MOUNT COT HARDWARE

MODULE WIDTH = 96"
 MODULE LENGTH = 169"
 MODULE HEAD ROOM = 72"

THIS DRAWING IS FOR REPRESENTATIONAL PURPOSES ONLY. DETAILS ARE CONCEPTUAL AND ARE SUBJECT TO CHANGE DURING DESIGN AND CONSTRUCTION DIMENSIONS ARE APPROXIMATE UNLESS NOTED OTHERWISE TO MEET A SPECIFIC CUSTOMER NEED.

AUTOTRONICS
 DEMO



FLOOR INTERIOR VIEW
 CHIEF XL-III

DATE: 03-25-22
 DWG. SER NR

DRAWING NO. CPQ-5956 DEMO-9